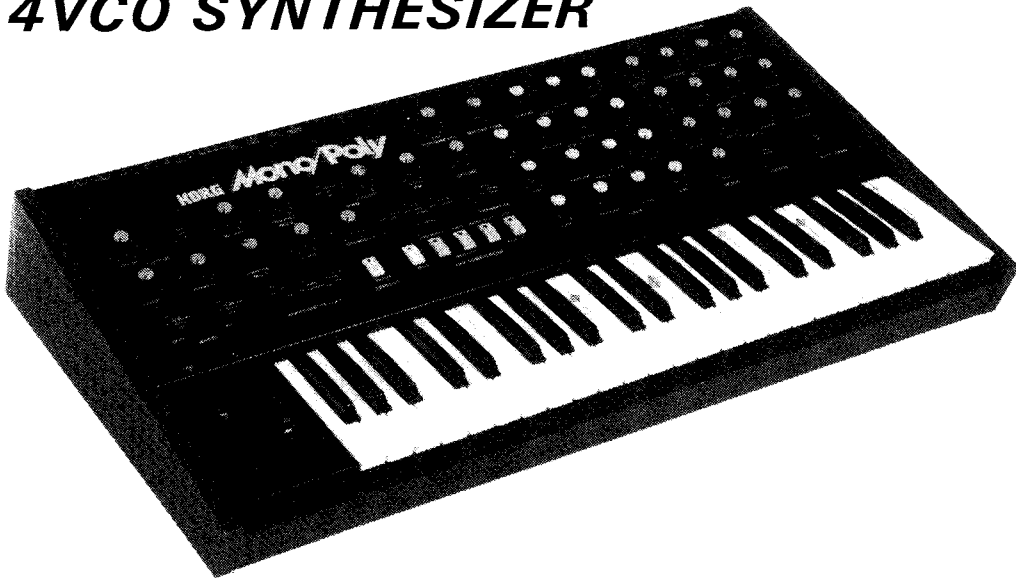


KORG MONO/POLY

4VCO SYNTHESIZER



SETTING CHARTS

EINSTELLDIAGRAMME

TABLEAUX DE PROGRAMMATION

セッティングチャート

KORG®

It is a good idea to vary VCF and EG settings slightly to compensate for tone color changes due to amp and speaker characteristics.

Durch eine leichte Veränderung der VCF- und EG-Einstellung lassen sich Klangfarbenvariationen aufgrund von Verstärker- und Lautsprechereigenschaften gut kompensieren.

Il est bon de modifier légèrement les réglages de VCF et EG pour compenser les variations de timbre dues aux caractéristiques de l'amplificateur et des haut-parleurs.

使用するアンプや再生装置によって音色が異なることがありますので、その際はVCFやEGのつまみの位置を少し変えてください。

KORG MonoPoly

VOLUME OUTPUT		4	6	5	0	0	MASTER TUNE	PWM	8'	10	5	1	+1	7	
INTENSITY		FREQUENCY	FREQUENCY MG 2	VCF EG MG1/MG2	INTENSITY	WIDTH PW	DETUNE	WAVE FORM	OCTAVE	LEVEL	CUTOFF	RESONANCE	VCF	EG INTENSITY	
BEND		WAVE FORM MG 1	L-MOD	FREQ MOD	VCF EG MG1	SYNC SET L-MOD	SINGLE DOUBLE	TUNE	WAVE FORM	OCTAVE	LEVEL	0	4	3	1
WHEEL		ARPEGGIATOR by MG 2	ON/OFF	EFFECTS	CHORD MEMORY	UNISON	UNISON/SHARE	TUNE	PWM	8'	10	0	5	7	1
BEND * MG 1 *		ARPEGGIATOR by MG 2	ON/OFF	EFFECTS	KEY ASSIGN MODE	POLY		TUNE	WAVE FORM	OCTAVE	LEVEL	0	5	7	1
		ARPEGGIATOR by MG 2	ON/OFF	EFFECTS	KEY ASSIGN MODE	POLY		TUNE	WAVE FORM	OCTAVE	LEVEL	0	5	7	1
		ARPEGGIATOR by MG 2	ON/OFF	EFFECTS	KEY ASSIGN MODE	POLY		TUNE	WAVE FORM	OCTAVE	LEVEL	0	5	7	1

4. Synthetic Guitar
Metallischer Gitarrenklang
Guitare Synthétique
シンセギター



KORG MonoPoly

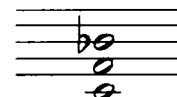
VOLUME OUTPUT		0	0	3	5	3	0	PWM	16	10	2	3	+2	3	
INTENSITY		FREQUENCY	FREQUENCY MG 2	VCF EG MG1/MG2	INTENSITY	WIDTH PW	DETUNE	WAVE FORM	OCTAVE	LEVEL	CUTOFF	RESONANCE	VCF	EG INTENSITY	
BEND		WAVE FORM MG 1	L-MOD	FREQ MOD	VCF EG MG1	SYNC SET L-MOD	SINGLE DOUBLE	TUNE	WAVE FORM	OCTAVE	LEVEL	0	2	1	1
WHEEL		ARPEGGIATOR by MG 2	ON/OFF	EFFECTS	CHORD MEMORY	UNISON	UNISON/SHARE	TUNE	PWM	16	10	0	2	4	1
BEND * MG 1 *		ARPEGGIATOR by MG 2	ON/OFF	EFFECTS	KEY ASSIGN MODE	POLY		TUNE	PWM	8	10	0	2	4	1
		ARPEGGIATOR by MG 2	ON/OFF	EFFECTS	KEY ASSIGN MODE	POLY		TUNE	PWM	8	10	0	2	4	1
		ARPEGGIATOR by MG 2	ON/OFF	EFFECTS	KEY ASSIGN MODE	POLY		TUNE	PWM	8	10	0	2	4	1

5. Bass Synthe
Synthe-Baß
Graves Synthé
シンセベース

KORG MonoPoly

VOLUME OUTPUT		0	0	0	0	0	0	PWM	8'	10	5	5	+1	2	
INTENSITY		FREQUENCY	FREQUENCY MG 2	VCF EG MG1/MG2	INTENSITY	WIDTH PW	DETUNE	WAVE FORM	OCTAVE	LEVEL	CUTOFF	RESONANCE	VCF	EG INTENSITY	
BEND		WAVE FORM MG 1	L-MOD	FREQ MOD	VCF EG MG1	SYNC SET L-MOD	SINGLE DOUBLE	TUNE	WAVE FORM	OCTAVE	LEVEL	1	4	5	1
WHEEL		ARPEGGIATOR by MG 2	ON/OFF	EFFECTS	CHORD MEMORY	UNISON	UNISON/SHARE	TUNE	WAVE FORM	OCTAVE	LEVEL	0.5	7	3	1
BEND * MG 1 *		ARPEGGIATOR by MG 2	ON/OFF	EFFECTS	KEY ASSIGN MODE	POLY		TUNE	WAVE FORM	OCTAVE	LEVEL	0	7	3	1
		ARPEGGIATOR by MG 2	ON/OFF	EFFECTS	KEY ASSIGN MODE	POLY		TUNE	WAVE FORM	OCTAVE	LEVEL	0	7	3	1
		ARPEGGIATOR by MG 2	ON/OFF	EFFECTS	KEY ASSIGN MODE	POLY		TUNE	WAVE FORM	OCTAVE	LEVEL	0	7	3	1

6. Harmonic Wah-Synthe
Wah-Synthesizer
Wah-Synthé Harmonique
ハーモニックワウシンセ




KORG MonoPoly

VOLUME OUTPUT		3 FREQUENCY	2 FREQUENCY MG 2	8 PWM INTENSITY	6 DETUNE	1 THE PORTAMENTO	MASTER TUNE	PWM WAVE FORM VCO 1	4' OCTAVE	8 LEVEL	6 CUTOFF	7 RESONANCE	0 VCF EG INTENSITY	1 KEY TRACK
0 INTENSITY		WAVE FORM MG 1	1 MOD	FREQ MOD	VCF EG MG 1	UP NORMAL DOWN	TUNE	PWM WAVE FORM VCO 2	4' OCTAVE	8 LEVEL	ATTACK DECAY VCF EG SUSTAIN RELEASE			
1 INTENSITY		FULL SOFT VOLT UP DOWN LATCH ON OFF	ON/OFF	CHORD MEMORY	UNISON	UNISON/SHARE	TUNE	PWM WAVE FORM VCO 3	4' OCTAVE	8 LEVEL	2 ATTACK	5 DECAY	9 VCA EG SUSTAIN	1 RELEASE
BEND WHEEL		APPEGIATOR by MG 2	EFFECTS	KEY ASSIGN MODE			TUNE	PWM WAVE FORM VCO 4	4' OCTAVE	8 LEVEL	0 LEVEL NOISE	SINGLE MULTIPLE TRIGGER	ON OFF AUTO DAMP	
BEND WHEEL MG 1		<p>13. Chorus (women) Frauenchor Chœur (de femmes) コーラス (女声)</p>												

KORG MonoPoly

VOLUME OUTPUT		3 FREQUENCY	WAVE FORM MG 1	1 MOD	FREQ MOD	VCF EG MG 1	UP NORMAL DOWN	0 THE PORTAMENTO	MASTER TUNE	WAVE FORM VCO 1	OCTAVE	0 LEVEL	4.8 CUTOFF	9 RESONANCE	+0.5 VCF EG INTENSITY	6 KEY TRACK
0 INTENSITY		WAVE FORM MG 1	1 MOD	FREQ MOD	VCF EG MG 1	UP NORMAL DOWN	TUNE	WAVE FORM VCO 2	OCTAVE	0 LEVEL	1 ATTACK	4 DECAY	9 VCF EG SUSTAIN	1 RELEASE		
1 INTENSITY		FULL SOFT VOLT UP DOWN LATCH ON OFF	ON/OFF	CHORD MEMORY	UNISON	UNISON/SHARE	TUNE	WAVE FORM VCO 3	OCTAVE	0 LEVEL	2 ATTACK	5 DECAY	3 VCA EG SUSTAIN	1 RELEASE		
BEND WHEEL		APPEGIATOR by MG 2	EFFECTS	KEY ASSIGN MODE			TUNE	WAVE FORM VCO 4	OCTAVE	0 LEVEL	1 LEVEL NOISE	SINGLE MULTIPLE TRIGGER	ON OFF AUTO DAMP			
BEND WHEEL MG 1		<p>14. Whistle Trillerflöte Sifflement 口笛</p>														

KORG MonoPoly

VOLUME OUTPUT		1 FREQUENCY	WAVE FORM MG 1	1 MOD	FREQ MOD	VCF EG MG 1	UP NORMAL DOWN	0 THE PORTAMENTO	MASTER TUNE	WAVE FORM VCO 1	OCTAVE	9 LEVEL	2 CUTOFF	2 RESONANCE	+2 VCF EG INTENSITY	3 KEY TRACK
2 INTENSITY		WAVE FORM MG 1	1 MOD	FREQ MOD	VCF EG MG 1	UP NORMAL DOWN	TUNE	WAVE FORM VCO 2	OCTAVE	9 LEVEL	0 ATTACK	6 DECAY	2 VCF EG SUSTAIN	6 RELEASE		
1 INTENSITY		FULL SOFT VOLT UP DOWN LATCH ON OFF	ON/OFF	CHORD MEMORY	UNISON	UNISON/SHARE	TUNE	WAVE FORM VCO 3	OCTAVE	8 LEVEL	0 ATTACK	6 DECAY	1 VCA EG SUSTAIN	8 RELEASE		
BEND WHEEL		APPEGIATOR by MG 2	EFFECTS	KEY ASSIGN MODE			TUNE	WAVE FORM VCO 4	OCTAVE	8 LEVEL	0 LEVEL NOISE	SINGLE MULTIPLE TRIGGER	ON OFF AUTO DAMP			
BEND WHEEL MG 1		<p>15. Bell (Western style) Kirchenglocken Cloche (Occidental) 鐘 (西洋風)</p> 														

KORG MonoPoly

KORG MonoPoly				0 PORTAMENTO	MASTER TUNE	WAVE FORM VCO 1	16'	6	1 CUTOFF	2 RESONANCE	+2 VCF	EG INTENSITY	3 HSD TRACK		
VOLUME OUTPUT	FREQUENCY	FREQUENCY MG 2	VCF EG MG1 MG2	INTENSITY	WIDTH PW	0 DETUNE	TUNE	WAVE FORM VCO 2	4'	10	0.1 ATTACK	7 DECAY	3 VCF EG	7 SUSTAIN	7 RELEASE
INTENSITY	INTENSITY	WAVE FORM MG 1	7 X-MOD	0 FREQ MOD	VCF EG MG1	SYNC S&T X-MOD	SINGLE DOUBLE	UP NORMAL DOWN	2'	6	0 ATTACK	8 DECAY	7 VCA EG	7 SUSTAIN	6 RELEASE
BEND V	WHEEL	ARPEGIATOR by MG 2	EFFECTS	CHORD MEMORY	UNISON	UNISONSHARE	POLY	TUNE	WAVE FORM VCO 3	4'	0 LEVEL	NOISE	SINGLE MULTIPLE	TRIGGER	ON OFF
BEND V	MG 1 V	<p>16. Bell Glockenklänge Cloche 鐘</p>													

KORG MonoPoly

KORG MonoPoly				0 PORTAMENTO	MASTER TUNE	PWM	8'	7	5 CUTOFF	2 RESONANCE	+2 VCF	EG INTENSITY	6 HSD TRACK			
VOLUME OUTPUT	FREQUENCY	FREQUENCY MG 2	VCF EG MG1 MG2	3.5 INTENSITY	WIDTH PW	0 DETUNE	TUNE	PWM	2'	10	0 ATTACK	4 DECAY	1 VCF EG	2 SUSTAIN	2 RELEASE	
INTENSITY	INTENSITY	WAVE FORM MG 1	0 X-MOD	5 FREQ MOD	VCF EG MG1	SYNC S&T X-MOD	SINGLE DOUBLE	UP NORMAL DOWN	8'	7	0 ATTACK	4 DECAY	1 VCA EG	1 SUSTAIN	2 RELEASE	
BEND V	WHEEL	ARPEGIATOR by MG 2	EFFECTS	CHORD MEMORY	UNISON	UNISONSHARE	POLY	TUNE	PWM	2'	10	0 LEVEL	NOISE	SINGLE MULTIPLE	TRIGGER	ON OFF
BEND V	MG 1 V	<p>17. Pulsar Sound Pulsierender Klang Son d'impulsion パルサーサウンド</p>														

KORG MonoPoly

KORG MonoPoly				0 PORTAMENTO	MASTER TUNE	WAVE FORM VCO 1	16'	10	7 CUTOFF	1 RESONANCE	+2 VCF	EG INTENSITY	4 HSD TRACK			
VOLUME OUTPUT	FREQUENCY	FREQUENCY MG 2	VCF EG MG1 MG2	INTENSITY	WIDTH PW	0 DETUNE	TUNE	WAVE FORM VCO 2	4'	9	6 ATTACK	8 DECAY	6 VCF EG	3 SUSTAIN	3 RELEASE	
INTENSITY	INTENSITY	WAVE FORM MG 1	5 X-MOD	0 FREQ MOD	VCF EG MG1	SYNC S&T X-MOD	SINGLE DOUBLE	UP NORMAL DOWN	2'	7	0 ATTACK	2 DECAY	9 VCA EG	9 SUSTAIN	1 RELEASE	
BEND V	WHEEL	ARPEGIATOR by MG 2	EFFECTS	CHORD MEMORY	UNISON	UNISONSHARE	POLY	TUNE	WAVE FORM VCO 3	8'	10	0 LEVEL	NOISE	SINGLE MULTIPLE	TRIGGER	ON OFF
BEND V	MG 1 V	<p>18. Synchron Sound SYNC (Metallischer Synthesizer-Klang) Son Synchronique シンクロサウンド</p>														

KORG MonoPoly

KORG MonoPoly					0 TIME PORTAMENTO	1 MASTER TUNE	PW 8' 9 WAVE FORM VCO 1 OCTAVE LEVEL	6 7 -2 4 CUTOFF RESONANCE VCF EG INTENSITY KEY TRACK
VOLUME OUTPUT	FREQUENCY	FREQUENCY MG 2	VCF EG MG1 MG2 INTENSITY WIDTH PW	0 DETUNE	1 TUNE	PW 8' 9 WAVE FORM VCO 2 OCTAVE LEVEL	3 3 2 2 ATTACK DECAY VCF EG SUSTAIN RELEASE	
0 7 INTENSITY INTENSITY VCO BLEND VCO VCF VCO BLEND VCO VCF VCO BEND WHEEL	WAVE FORM MG 1	X-MOD	FREQ MOD	VCF EG MG1 SYNC SEL X-MOD SINGLE DOUBLE MODE	UP NORMAL DOWN	1 TUNE	PW 8' 9 WAVE FORM VCO 3 OCTAVE LEVEL	0 5.5 3 4 ATTACK DECAY VCA EG SUSTAIN RELEASE
FULL SOFT UP DOWN LATCH ON OFF SOFT UPDOWN	ARPEGGIATOR by MG 2	ON/OFF	EFFECTS	CHORD MEMORY UNISON UNISON/SHARE POLY HOLD MONO POLY	KEY ASSIGN MODE	1 TUNE	PW 8' 9 WAVE FORM VCO 4 OCTAVE LEVEL	0 SINGLE MULTIPLE ON OFF NOISE TRIGGER AUTO DAMP
BEND Y MG 1 Y	<p>19. MOON Sound Utopischer Klang Son "MOON" ムーンサウンド</p>							

KORG MonoPoly

KORG MonoPoly					0 TIME PORTAMENTO	1 MASTER TUNE	7 8' 10 WAVE FORM VCO 1 OCTAVE LEVEL	8 2 -2 3 CUTOFF RESONANCE VCF EG INTENSITY KEY TRACK
VOLUME OUTPUT	FREQUENCY	FREQUENCY MG 2	VCF EG MG1 MG2 INTENSITY WIDTH PW	0 DETUNE	1 TUNE	7 8' 10 WAVE FORM VCO 2 OCTAVE LEVEL	0 9 6 3 ATTACK DECAY VCF EG SUSTAIN RELEASE	
0 0 INTENSITY INTENSITY VCO BLEND VCO VCF VCO BLEND VCO VCF VCO BEND WHEEL	WAVE FORM MG 1	2 3 X-MOD	FREQ MOD	VCF EG MG1 SYNC SEL X-MOD SINGLE DOUBLE MODE	UP NORMAL DOWN	1 TUNE	7 8' 10 WAVE FORM VCO 3 OCTAVE LEVEL	8 6 0 0 ATTACK DECAY VCA EG SUSTAIN RELEASE
FULL SOFT UP DOWN LATCH ON OFF SOFT UPDOWN	ARPEGGIATOR by MG 2	ON/OFF	EFFECTS	CHORD MEMORY UNISON UNISON/SHARE POLY HOLD MONO POLY	KEY ASSIGN MODE	1 TUNE	7 8' 10 WAVE FORM VCO 4 OCTAVE LEVEL	0 SINGLE MULTIPLE ON OFF NOISE TRIGGER AUTO DAMP
BEND Y MG 1 Y	<p>20. GROK Sound GROK Klang Son "GROK" グロックサウンド</p>							

KORG MonoPoly

KORG MonoPoly					0 TIME PORTAMENTO	1 MASTER TUNE	4' 10 WAVE FORM VCO 1 OCTAVE LEVEL	1 0 +4 3 CUTOFF RESONANCE VCF EG INTENSITY KEY TRACK
VOLUME OUTPUT	FREQUENCY	FREQUENCY MG 2	VCF EG MG1 MG2 INTENSITY WIDTH PW	3 DETUNE	1 TUNE	4' 2' 10 WAVE FORM VCO 2 OCTAVE LEVEL	0.8 2 0 2 ATTACK DECAY VCF EG SUSTAIN RELEASE	
0 0 INTENSITY INTENSITY VCO BLEND VCO VCF VCO BLEND VCO VCF VCO BEND WHEEL	WAVE FORM MG 1	3 1 X-MOD	FREQ MOD	VCF EG MG1 SYNC SEL X-MOD SINGLE DOUBLE MODE	UP NORMAL DOWN	1 TUNE	4' 4' 10 WAVE FORM VCO 3 OCTAVE LEVEL	0 1 0 2 ATTACK DECAY VCA EG SUSTAIN RELEASE
FULL SOFT UP DOWN LATCH ON OFF SOFT UPDOWN	ARPEGGIATOR by MG 2	ON/OFF	EFFECTS	CHORD MEMORY UNISON UNISON/SHARE POLY HOLD MONO POLY	KEY ASSIGN MODE	1 TUNE	4' 2' 10 WAVE FORM VCO 4 OCTAVE LEVEL	0 SINGLE MULTIPLE ON OFF NOISE TRIGGER AUTO DAMP
BEND Y MG 1 Y	<p>21. Steel Drum Steel Drum Tambour Métallique スティールドラム</p>							

KORG MonoPoly

VOLUME OUTPUT		FREQUENCY	FREQUENCY MG 2	VCF EG MG1	PWM INTENSITY	WIDTH PW	DETUNE	TUNE	WAVE FORM	OCTAVE	LEVEL	CUTOFF	RESONANCE	VCF EG INTENSITY	ARSO TRACK	
0	PORTAMENTO	0	0	3	4	4	0	0	8'	10	10	3	2	+3	7	
INTENSITY	INTENSITY	WAVE FORM MG 1	1-MOD	FREQ MOD	VCF EG MG 1	SYNC S&T 3-MOD	SINGLE DOUBLE	UP NORMAL DOWN	0	PW	8'	10	4.5	3	10	8
WHEEL	WHEEL	ARPEGIATOR by MG 2	EFFECTS	CHORD MEMORY	UNISON	UNISON SHARE	POLY	0	0	8'	10	0	7	7	7	0
BEND V	MG 1 V	APPEGIATOR by MG 2	EFFECTS	KEY ASSIGN MODE	0	0	0	0	0	0	8'	10	8	0	0	0

22. KING GONG
Großer Gong
KING GONG
キングゴング

KORG MonoPoly

VOLUME OUTPUT		FREQUENCY	FREQUENCY MG 2	VCF EG MG1	PWM INTENSITY	WIDTH PW	DETUNE	TUNE	WAVE FORM	OCTAVE	LEVEL	CUTOFF	RESONANCE	VCF EG INTENSITY	ARSO TRACK	
0	PORTAMENTO	0	0	3	0	0	0	0	16	10	10	4	1.5	1.5	5	
INTENSITY	INTENSITY	WAVE FORM MG 1	1-MOD	FREQ MOD	VCF EG MG 1	SYNC S&T 3-MOD	SINGLE DOUBLE	UP NORMAL DOWN	0	16	10	0	1	0	0	
WHEEL	WHEEL	ARPEGIATOR by MG 2	EFFECTS	CHORD MEMORY	UNISON	UNISON SHARE	POLY	0	0	2	10	0	4	0	1	
BEND V	MG 1 V	APPEGIATOR by MG 2	EFFECTS	KEY ASSIGN MODE	0	0	0	0	0	2	10	10	0	0	0	

23. Alternative Rythem
Arpeggiator-klang
Rythme Alternatif
オルタネーティブリズム

KORG MonoPoly

VOLUME OUTPUT		FREQUENCY	FREQUENCY MG 2	VCF EG MG1	PWM INTENSITY	WIDTH PW	DETUNE	TUNE	WAVE FORM	OCTAVE	LEVEL	CUTOFF	RESONANCE	VCF EG INTENSITY	ARSO TRACK	
0	PORTAMENTO	0	0	2	7	0	0	0	8'	0	0	8	1	0	5	
INTENSITY	INTENSITY	WAVE FORM MG 1	1-MOD	FREQ MOD	VCF EG MG 1	SYNC S&T 3-MOD	SINGLE DOUBLE	UP NORMAL DOWN	0	8'	10	8	8	5	5	
WHEEL	WHEEL	ARPEGIATOR by MG 2	EFFECTS	CHORD MEMORY	UNISON	UNISON SHARE	POLY	0	0	8'	10	0	3	5	2	
BEND V	MG 1 V	APPEGIATOR by MG 2	EFFECTS	KEY ASSIGN MODE	0	0	0	0	0	8'	10	10	0	0	0	

24. Shooting
Elektvonengewehr
Fusillard
銃撃戦

Blanc Charts Leerdiagramm Diagramme libre ブランクチャート

■ Make copies of the Blank Chart and use them to record the settings you find useful.

■ Fertigen Sie Kopien dieses Leerdiagramms an und tragen Sie einmal als nützlich gefundene Einstellungen ein.

■ Tirer des copies du diagramme libre et s'en servir pour noter les réglages qui vous sont utiles.

■ このブランクチャートをコピーして、あなた自身のセッティングの記録用にご利用ください。

KORG Mono/Poly

Blank settings chart template for KORG Mono/Poly. The chart is a grid of control parameters, each represented by a circle (knob) or a vertical bar (slider). The parameters are organized as follows:

- Row 1:** PORTAMENTO, MASTER TUNE, WAVE FORM VCO 1, OCTAVE, LEVEL, CUTOFF, RESONANCE, VCF, EG INTENSITY, HIB TRACK.
- Row 2:** VOLUME OUTPUT (HIGH/LOW OFF), FREQUENCY, FREQUENCY MG 2, VCF EG MG1/MG2, INTENSITY, WIDTH PW, DETUNE, TUNE, WAVE FORM VCO 2, OCTAVE, LEVEL, ATTACK, DECAY, VCF EG, SUSTAIN, RELEASE.
- Row 3:** INTENSITY, INTENSITY, WAVE FORM MG 1, X-MOD, FREQ MOD, VCF EG MG 1, SYNC SEX, X-MOD, SINGLE DOUBLE, LP NORMAL DOWN, TRANS POSE, TUNE, WAVE FORM VCO 3, OCTAVE, LEVEL, ATTACK, DECAY, VCA EG, SUSTAIN, RELEASE.
- Row 4:** BEND, WHEEL, FULL SOFT, UP DOWN, LATCH ON/OFF, EFFECTS, CHORD MEMORY, UNISON, UNISONSHARE, POLY, KEY ASSIGN MODE (HOLD, MONO, POLY), TUNE, WAVE FORM VCO 4, OCTAVE, LEVEL, LEVEL NOISE, TRIGGER (SINGLE/MULTIPLE), AUTO DAMP (ON/OFF).
- Row 5:** BEND, WHEEL, MG 1, W.

KORG Mono/Poly

Blank settings chart template for KORG Mono/Poly. The chart is a grid of control parameters, each represented by a circle (knob) or a vertical bar (slider). The parameters are organized as follows:

- Row 1:** PORTAMENTO, MASTER TUNE, WAVE FORM VCO 1, OCTAVE, LEVEL, CUTOFF, RESONANCE, VCF, EG INTENSITY, HIB TRACK.
- Row 2:** VOLUME OUTPUT (HIGH/LOW OFF), FREQUENCY, FREQUENCY MG 2, VCF EG MG1/MG2, INTENSITY, WIDTH PW, DETUNE, TUNE, WAVE FORM VCO 2, OCTAVE, LEVEL, ATTACK, DECAY, VCF EG, SUSTAIN, RELEASE.
- Row 3:** INTENSITY, INTENSITY, WAVE FORM MG 1, X-MOD, FREQ MOD, VCF EG MG 1, SYNC SEX, X-MOD, SINGLE DOUBLE, LP NORMAL DOWN, TRANS POSE, TUNE, WAVE FORM VCO 3, OCTAVE, LEVEL, ATTACK, DECAY, VCA EG, SUSTAIN, RELEASE.
- Row 4:** BEND, WHEEL, FULL SOFT, UP DOWN, LATCH ON/OFF, EFFECTS, CHORD MEMORY, UNISON, UNISONSHARE, POLY, KEY ASSIGN MODE (HOLD, MONO, POLY), TUNE, WAVE FORM VCO 4, OCTAVE, LEVEL, LEVEL NOISE, TRIGGER (SINGLE/MULTIPLE), AUTO DAMP (ON/OFF).
- Row 5:** BEND, WHEEL, MG 1, W.

KORG[®]

KEIO ELECTRONIC LABORATORY CORP.
15-12, Shimotakaido 1-chome, Suginami-ku, Tokyo, Japan.

5709GTH PRINTED IN JAPAN